

DELAWARE

INTERFACING SUSTAINABLE ENERGY & MATERIALS **REU**

JOIN a leading team of investigators on projects that will foster your interests, education, and research skills in a stimulating multi-disciplinary science and engineering environment. Focus on the engineering challenges of the 21st century. Help develop

JOIN a leading team of investigators on projects that will foster your interests, education, and research skills in a stimulating multi-disciplinary science and engineering environment. Focus on the engineering challenges of the 21st century. Help develop

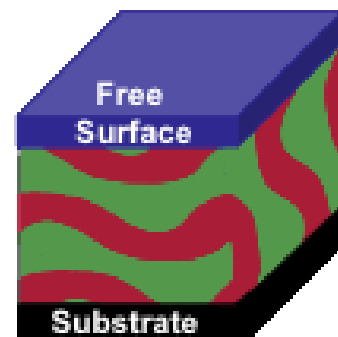
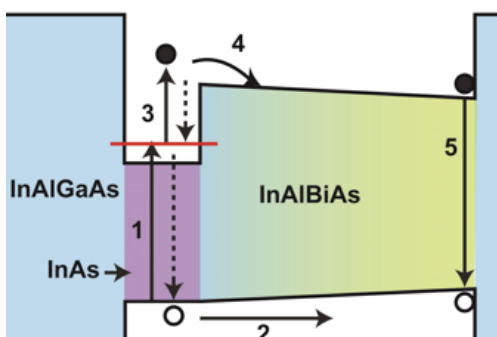
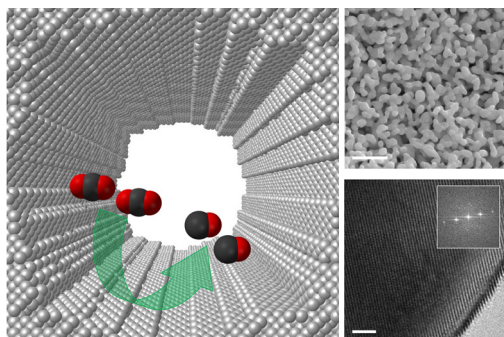
conversion. Browse our web page at www.che.udel.edu for updated news and information.

For Summer 2018

**Application deadline:
February 1, 2018**

A University of Delaware Research Experiences for Undergraduates program sponsored by the National Science Foundation and the Department of Defense Air Force Office of Scientific Research





Choose your research topic

Chose projects from over 13 faculty research groups and work as an independent research student alongside PhD students and postdoctoral researchers in Delaware's Chemical and Biomolecular Engineering, Materials Science,

and Biomedical Engineering departments. Core research themes of the REU include solar energy, biomass conversion, thermoelectrics, fuel cells, and bio-inspired materials.

Visit industrial labs

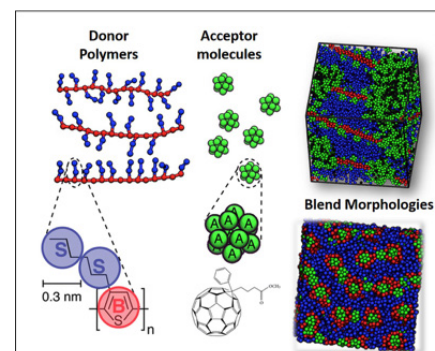
Participants will visit several global research facilities in the Delaware valley during the summer, including Dow, DuPont, ExxonMobil, Air- Liquide, and W. L. Gore global R&D. The R&D

projects REU students will see span biomass-generated energy to the development of nextgeneration fuel cell membranes. Two trips are scheduled each summer.

Develop skills

You will have ample opportunity for professional development, including workshops on research ethics, written and oral communication skills, and grad school prep boot camp, as well as the chance to hear world-class national

and international scientists and engineers as part of the Center for Catalytic Science and Technology and Center for Molecular and Engineering Thermodynamics seminar series.



Apply

Application to the program is coordinated through the Department of Chemical and Biomolecular Engineering. The application deadline is February 1, 2018, but earlier applications are encouraged. Browse our web page at www.che.udel.edu for updated news and information or contact us at cheg-reu@udel.edu

Location

The University of Delaware has a college-town atmosphere, yet is centrally located between New York City and Washington, D.C., at the heart of the east coast's chemical and energy industries.

Contact

telephone 302-831-2543
email cheg-reu@udel.edu
web www.che.udel.edu

